



**Dynalon®  
Labware**

# Bio-bin® Disposal Containers

A CALIBRE SCIENTIFIC COMPANY

**REDUCE** cost, weight, transport,  
CO2 emissions and storage space



The ideal solution for biohazard or non-hazardous waste.

- Space efficient, light weight fold-flat design
- Built-in lid and handles
- Stackable post use
- UN 3291 approved
- Temporary and permanent seals
- Waterproof construction
- Autoclavable
- Supplied with 2 x 2" Biohazard Waste Labels
- Printed user instructions and user ID/date information on lid
- Built-in super absorbent Bio-matt™ to soak up any excess liquid
- Reorder information printed on box

Bio-bins® are a cost effective and convenient alternative to rigid plastic waste collection and disposal containers. They are ideal for use in academic, clinical, government & industrial laboratories for a wide range of non-sharps biomedical and laboratory waste that require special heat treatment such as autoclaving or incineration before final disposal.

Common items such as microbiological loops, pipettes, tips, test tubes, swabs and vials are ideal for disposal using this method.



PRODUCT	DESCRIPTION	UOM	CODE
Bio-bin®	2.5L Loop Model	CS/50	797303-0002
Bio-bin®	5L Pipette Model	CS/50	797303-0006
Bio-bin®	6L Pipette Model	CS/40	797303-0006
Bio-bin®	30L Floor Model	CS/10	797303-0030
Stand	2.5L M-stand	EA/1	797303-6100
Stand	5L M-stand	EA/1	797303-6055
Stand	6L U-stand	EA/1	797303-6100
Stand	6L Z-stand	EA/1	797303-6200
Stand	30L M-stand	EA/1	797303-6300
Stand	30L Wheeled	EA/1	797303-6300

cs@dyna-labware.com  
800.334.7585

dynalon.com

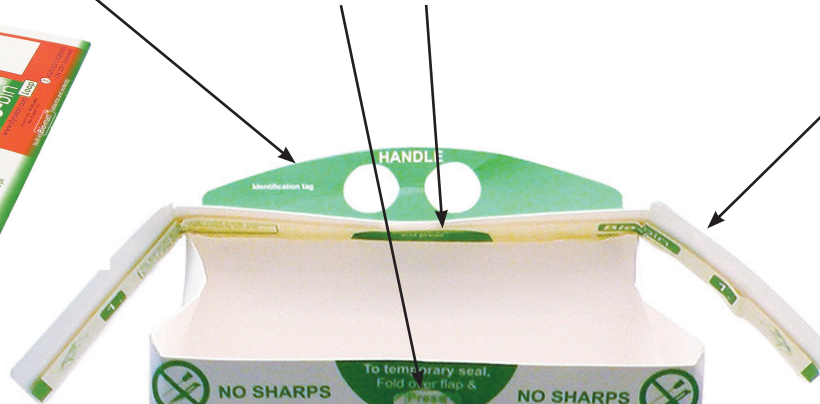


**Fold-flat**  
2.5L and 30L  
Bio-bin® are  
delivered folded flat

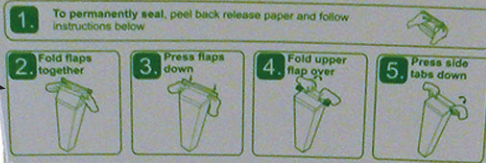


**Temporary Seal**  
When lid is folded  
down press here for  
temporary seal

**Permanent Seal**  
Peel off release  
paper and fold down  
lid to seal permanently



**Printed user instructions**  
Simple instructions  
on how to seal  
the Bio-bin®



**Built in lid**  
Push inwards here  
to close lid



**Biohazard**  
Supplied with 2" x 2"  
Biohazard labels for user  
application if necessary

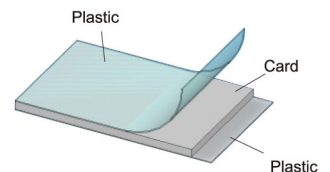


**No sharps**  
Only used for non-sharp  
infectious waste.



**Light weight**  
Weighs up to 65%  
less than plastic  
alternatives

**Water proof construction**  
96% paper construction  
with a very thin coating  
of plastic laminated to  
make it water proof  
inside and out. Heat  
sealed joints prevent  
any leakage.



**Stackable pre and post use**  
Once 6L and 30L Bio-bins  
are sealed down they can  
be stacked on top of each  
other.



**Dynalon®  
Labware**

A CALIBRE SCIENTIFIC COMPANY

**Absorbent Bio-matt™**  
Weighs up to 65% less  
than plastic alternatives

